

## AHA/ACCF Scientific Statement on the Evaluation of Syncope

From the American Heart Association Councils on Clinical Cardiology, Cardiovascular Nursing, Cardiovascular Disease in the Young, and Stroke, and the Quality of Care and Outcomes Research Interdisciplinary Working Group; and the American College of Cardiology Foundation  
In Collaboration With the Heart Rhythm Society

Endorsed by the American Autonomic Society

S. Adam Strickberger, MD; D. Woodrow Benson, MD, PhD; Italo Biaggioni, MD; David J. Callans, MD; Mitchell I. Cohen, MD; Kenneth A. Ellenbogen, MD; Andrew E. Epstein, MD; Paul Friedman, MD; Jeffrey Goldberger, MD; Paul A. Heidenreich, MD; George J. Klein, MD; Bradley P. Knight, MD; Carlos A. Morillo, MD; Robert J. Myerburg, MD; Cathy A. Sila, MD, FAHA

### Table of Contents

Introduction .....	316	Syncope in Other Forms of Structural Heart Disease .....	320
General Evaluation .....	316	Syncope Resulting From Inherited Cardiac Ion Channel Abnormalities .....	321
Syncope in the Patient With a Normal Evaluation .....	318	Evaluation of the Pediatric Patient With Syncope .....	321
Syncope in the Patient With Coronary Artery Disease .....	319	Special Considerations in the Elderly .....	323
Nonischemic Dilated Cardiomyopathy .....	320	Neurological Evaluation .....	323
		Conclusions .....	324

Syncope, a transient loss of consciousness, is a common clinical problem. The most common causes of syncope are cardiovascular in origin and are associated with a high rate of mortality in patients with underlying heart disease, transient myocardial ischemia, and other less common cardiac abnormalities.<sup>1</sup>

The primary purpose of the evaluation of the patient with syncope is to determine whether the patient is at increased risk for death. This involves identifying patients with underlying heart disease, myocardial ischemia, Wolff-Parkinson-White syndrome, and potentially life-threatening genetic diseases such as long-QT syndrome (LQTS), Brugada syndrome, and catecholaminergic polymorphic ventricular

tachycardia. If these diagnoses can be excluded, the goal then becomes identification of the cause of syncope in an attempt to improve the quality of the patient's life and to prevent injury to the patient or others. The purpose of this statement is to summarize the data that direct the evaluation of the patient with syncope (Figure 1).

### General Evaluation

In the general population, the most common cause of syncope is neurocardiogenic, followed by primary arrhythmias. Other names for neurocardiogenic syncope include neurally mediated, vasodepressor, and vasovagal syncope. The causes of syncope are highly age dependent.<sup>2</sup> Pediatric and young

The American Heart Association makes every effort to avoid any actual or potential conflicts of interest that may arise as a result of an outside relationship or a personal, professional, or business interest of a member of the writing panel. Specifically, all members of the writing group are required to complete and submit a Disclosure Questionnaire showing all such relationships that might be perceived as real or potential conflicts of interest.

This statement was approved by the American Heart Association Science Advisory and Coordinating Committee on August 3, 2005. A single reprint is available by calling 800-242-8721 (US only) or writing the American Heart Association, Public Information, 7272 Greenville Ave, Dallas, TX 75231-4596. Ask for reprint No. 71-0342. To purchase additional reprints: up to 999 copies, call 800-611-6083 (US only) or fax 413-665-2671; 1000 or more copies, call 410-528-4121, fax 410-528-4264, or e-mail kgray@lww.com. To make photocopies for personal or educational use, call the Copyright Clearance Center, 978-750-8400.

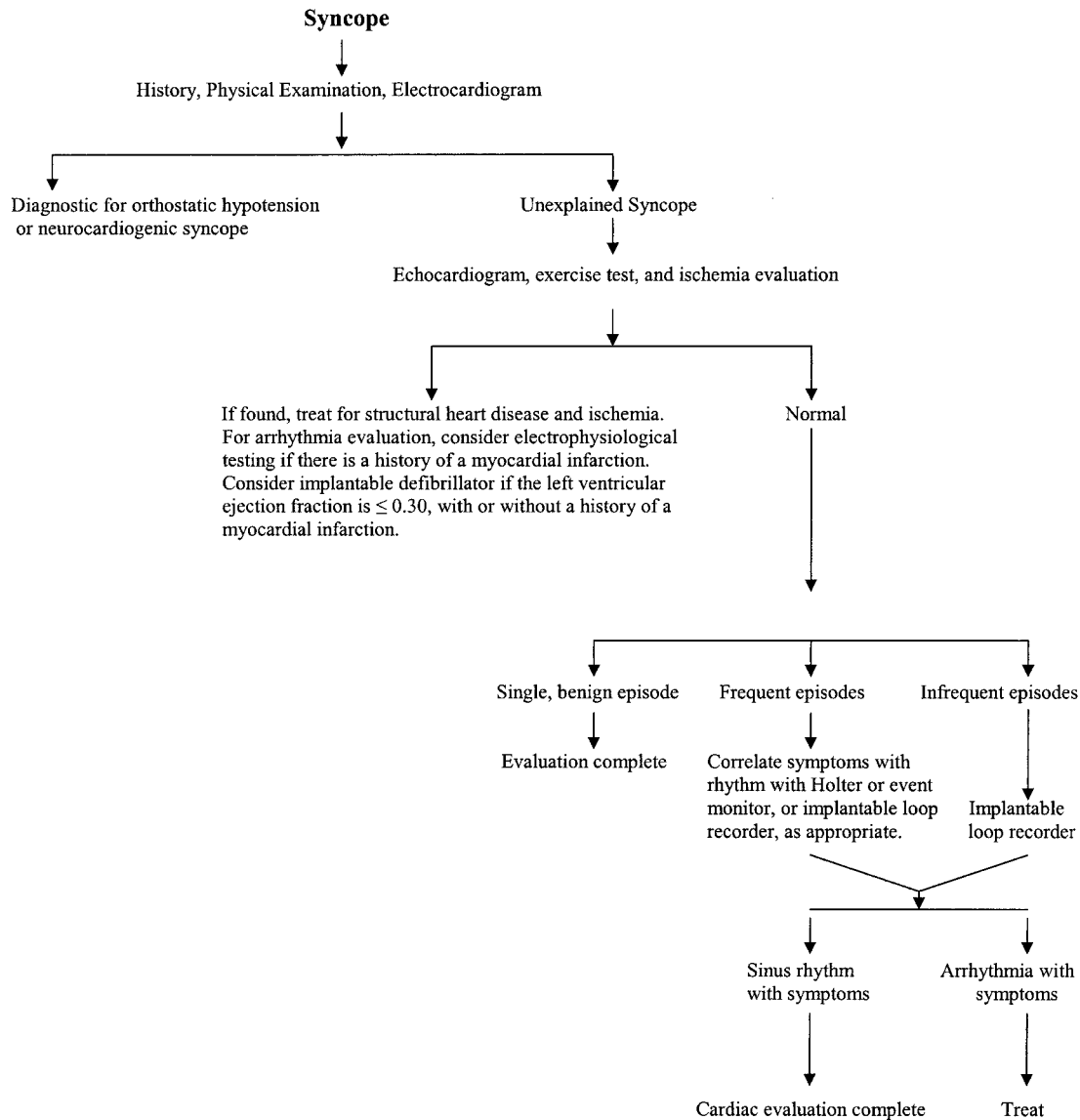
Expert peer review of AHA Scientific Statements is conducted at the AHA National Center. For more on AHA statements and guidelines development, visit <http://www.americanheart.org/presenter.jhtml?identifier=3023366>.

This article has been copublished in the *Journal of the American College of Cardiology*. (Circulation. 2006;113:316-327.)

© 2006 American Heart Association, Inc., and the American College of Cardiology Foundation.

Circulation is available at <http://www.circulationaha.org>

DOI: 10.1161/CIRCULATIONAHA.105.170274



**Figure 1.** Flow chart for the diagnostic approach to the patient with syncope.

patients are most likely to have neurocardiogenic syncope, conversion reactions (psychiatric causes), and primary arrhythmic causes such as the LQTS and Wolff-Parkinson-White syndrome. In middle age, neurocardiogenic syncope remains the most frequent cause of syncope. Syncope related to other forms of neurocardiogenic syncope such as deglutition, micturition, defecation, and cough, as well as orthostasis and panic disorders, is more common in the middle-aged or elderly patients than in younger patients. In contrast to younger patients, elderly patients have a higher frequency of syncope caused by obstructions to cardiac output, eg, aortic stenosis and pulmonary embolus, and arrhythmias resulting from underlying heart disease.

### History and Physical Examination

The approach to the patient with syncope begins with a meticulous history.<sup>1,3,4</sup> In most patients, the cause of syncope can be determined with great accuracy from a careful history and physical examination, although the mechanism of syn-

cope remains unexplained in 40% of episodes.<sup>3</sup> The process of evaluating the history, physical examination, and ECG should also include assessment of the medication list for agents associated with proarrhythmia, eg, Class IA and IC antiarrhythmic drugs.

Various aspects of the history help to establish the diagnosis. The observations of onlookers are important. The occurrence of tonic-clonic, seizurelike activity is associated with both cardiac and neurological causes of syncope.<sup>5</sup> Episodes of neurocardiogenic syncope are typically associated with postepisode fatigue or weakness, whereas the absence of a prodrome is consistent with cardiac arrhythmia or, less commonly, a central neurodegenerative disorder with autonomic failure such as Parkinson disease.<sup>6</sup> Auras, premonitions, postictal confusion, and focal neurological signs and symptoms suggest a neurological cause. Transient ischemic attacks rarely result in syncope. However, patients with basilar artery or severe bilateral carotid artery disease may have syncope that usually is associated with focal neurolog-

ical symptoms. A history of myocardial infarction with or without left ventricular dysfunction or repaired congenital heart disease raises the possibility of ventricular arrhythmias. A history of head trauma in a younger person without underlying heart disease may suggest a neurological origin, whereas syncope precipitated by neck turning, particularly in the elderly, raises the possibility of carotid sinus hypersensitivity. This can be assessed at the bedside with carotid sinus massage in patients in the supine and/or upright positions. However, this test should not be performed in patients with a recent transient ischemic attack or stroke, or ipsilateral to significant carotid artery stenosis or carotid artery bruit. The patient should be asked specifically if there is a positive family history for unexpected sudden cardiac death.

The history is also useful for identifying aggravating and alleviating factors. For example, the addition of a new drug, especially an antiarrhythmic or antihypertensive agent, raises the possibilities of proarrhythmia and orthostasis, respectively. In the elderly, phenothiazine and tricyclic drugs predispose to orthostasis. The possible role of over-the-counter medications and supplements, eg, ephedra-containing preparations, should be addressed.

During the evaluation of syncope, a careful physical examination is second only to the history. Orthostatic hypotension, autonomic dysfunction, and sometimes organic heart disease can be identified by measuring blood pressure and pulse rate in the upper and lower extremities and in the supine and upright positions. Carotid bruits raise the question of impaired cerebral blood flow and underlying coronary artery disease. The physical examination can also suggest the presence of pulmonary hypertension, left ventricular dysfunction, valvular heart disease, or other forms of organic heart disease. Abnormalities of cognition and speech, visual fields, motor strength, sensation, tremor, and gait disturbance suggest an underlying neurological disorder.

### **ECG, Echocardiogram, and Ischemia Evaluation**

The ECG provides important information about the rhythm and atrioventricular (AV) conduction. Sinus bradycardia, a prolonged PR interval, or bundle-branch block raises the possibility of symptomatic sick sinus syndrome or intermittent complete AV block. Examination of the QRS complex may identify the presence of a delta wave, signifying the presence of an accessory pathway and Wolff-Parkinson-White syndrome. Genetic diseases of cardiac channels such as the LQTS and Brugada syndrome can be identified on the surface ECG and can cause syncope and life-threatening ventricular arrhythmias.<sup>7</sup> The ECG may suggest arrhythmogenic right ventricular dysplasia/cardiomyopathy (ARVD/C), in which case a cardiac MRI may aid in establishing the diagnosis. Ventricular ectopy or nonsustained ventricular tachycardia in a patient with underlying heart disease raises the possibility of an arrhythmic origin of syncope.

An echocardiogram is a helpful screening test if the history, physical examination, and ECG do not provide a diagnosis or if underlying heart disease is suspected. The echocardiogram is an excellent way to identify underlying heart disease, including valvular disease. It can also suggest pulmonary embolism if pulmonary hypertension or right

ventricular enlargement is present. The most common cause of sudden death in athletes is hypertrophic cardiomyopathy, which is readily indicated by echocardiography.<sup>8</sup> The second most common cause of sudden death in the young is the presence of an anomalous coronary artery.<sup>8</sup> In young and thin individuals, the coronary ostia may be identified by a transthoracic echocardiogram, and if not visualized, the presence of an anomalous coronary artery may be further evaluated with a transesophageal echocardiogram, cardiac MRI or CT, or other imaging modality.

An evaluation for ischemia is appropriate in patients at risk for or with a history of coronary artery disease. Exercise testing should be performed in the patient with unexplained syncope, especially if the episode was exercise related. Exercise testing provides the opportunity to monitor pulse and blood pressure. In patients less than 40 years of age, a drop in blood pressure or failure of blood pressure to rise with exercise raises the question of hypertrophic obstructive cardiomyopathy or left main coronary artery disease<sup>9</sup>; in the elderly patient, it may be a manifestation of autonomic failure. Exercise testing also screens for catecholaminergic polymorphic ventricular tachycardia.

### **Syncope in the Patient With a Normal Evaluation**

In the absence of underlying heart disease, syncope is not associated with excess mortality. The main risk is related to physical harm that may occur if the patient has recurrent syncope. In this setting, the intensity of the workup to establish a diagnosis is determined by the "malignancy" of the episode. For the purposes of this statement, a malignant episode of syncope is defined as an episode of syncope that occurs with little or no warning and results in a significant injury or property damage, eg, a car accident.

When the general workup is normal, the origin of syncope can be extremely challenging to ascertain. Although many life-threatening clinical entities are less likely in the presence of a normal evaluation, the possibility of neurocardiogenic syncope, carotid sinus hypersensitivity, paroxysmal bradyarrhythmias, supraventricular tachycardia, ventricular tachycardia, and myriad noncardiac causes of syncope remains.<sup>10</sup> The gold standard for diagnosing an arrhythmic cause of syncope is ECG documentation of the rhythm disturbance at the time of symptoms. However, it is rare to have documentation of the cardiac rhythm from the initial episode of syncope.

### **Noninvasive ECG Monitoring**

The type and duration of ambulatory ECG monitoring is dictated by the frequency of symptoms. A Holter monitor is appropriate for episodes that occur at least every day. Event monitoring is ideal for episodes that occur at least once a month. An implantable loop monitor allows the correlation of symptoms with the cardiac rhythm in patients in whom the symptoms are infrequent.

Traditionally, ambulatory monitoring is carried out for 24 to 48 hours with a Holter monitor. The short duration of the recording limits the diagnostic yield. Event recorders allow ambulatory monitoring for 30 to 60 days. Patient triggering stores the ECG from 1 to 4 minutes before and 30 to 60

seconds after activation. The major limitation of the device is the complexity of its use, which results in patient errors with acquisition and transmission of data.<sup>11</sup> The introduction of continuously recording monitors that have both patient-activated and automatic triggers appears to improve the diagnostic yield of event monitors.<sup>12</sup>

Implantable loop recorders inserted subcutaneously are capable of recording bipolar ECG signals for approximately 14 months. The patient may use an activator to record the rhythm at the time of symptoms, and the device automatically records bradycardia and tachycardia. In patients with unexplained syncope, use of an implantable loop recorder for 1 year yielded diagnostic information in more than 90% of patients.<sup>12</sup> This approach is more likely to identify the mechanism of syncope than is a conventional approach that uses Holter or event monitors and electrophysiological testing and is cost-effective.<sup>13</sup>

Analysis of T-wave alternans with signal-averaged ECG and assessment of heart rate variability are noninvasive methods for identifying patients at increased risk for sudden cardiac death. The routine use of these tools in patients with syncope and a negative initial evaluation is not established and currently is not indicated.

#### ***Tilt Table Test***

Tilt table testing is used as an aid in establishing the diagnosis of neurocardiogenic syncope. However, serious questions about the sensitivity, specificity, diagnostic yield, and day-to-day reproducibility of tilt table testing exist.<sup>14–17</sup> The reported sensitivity and specificity of tilt table testing depend on the technique used. The sensitivity ranges from 26% to 80%, and the specificity is approximately 90%. In patients with a negative evaluation, ie, no evidence of ischemia and a structurally normal heart, the pretest probability that the diagnosis is neurocardiogenic syncope is high, so head-up tilt table testing contributes little to establishing the diagnosis. For example, in a patient of any age with an otherwise normal evaluation who has a negative tilt table test, the most likely diagnosis is still neurocardiogenic syncope. In patients with a malignant episode of syncope, it may be more important to rule out other causes of syncope such as bradyarrhythmias, supraventricular tachycardia, and ventricular tachycardia than it is to perform a tilt table test. This is especially true because the risk for recurrent syncope in the patient with a normal cardiac evaluation and syncope is similar in patients with a positive or negative tilt table test.

#### ***Electrophysiological Study***

Electrophysiological testing involves placement of transvenous catheters within the heart to assess sinus node function, AV conduction, and susceptibility to supraventricular and ventricular tachycardias. In patients with a normal evaluation for syncope, the yield of electrophysiological testing is approximately 3%.<sup>14</sup> The sensitivity of electrophysiological testing for the detection of bradyarrhythmias is low.<sup>15</sup> Because of the low yield of electrophysiological testing in patients without underlying heart disease, this test is not routinely recommended.<sup>16,17</sup> However, given the low risk of electrophysiological testing<sup>18</sup> and the high risk of recurrent syncope with potential harm to the patient, the risk-to-benefit

ratio may favor electrophysiological testing in patients with a malignant episode of syncope.

#### **Syncope in the Patient With Coronary Artery Disease**

The risk of death in a patient with syncope and coronary artery disease is directly proportional to the severity of left ventricular dysfunction. In the patient with coronary artery disease, recurrent episodes of ischemia and arrhythmia diagnoses such as bradycardia and ventricular tachycardia should be considered.

The major goal of the evaluation of syncope in the patient with coronary artery disease is to identify a potentially life-threatening diagnosis. This necessitates an evaluation for ischemia, underlying heart disease, and arrhythmias. If these patients require revascularization, the arrhythmia evaluation is still needed because, when present, the substrate for ventricular tachycardia and lethal ventricular arrhythmias is not ameliorated by revascularization. However, ventricular tachycardia or ventricular fibrillation that occurs in the setting of an acute ST-segment–elevation myocardial infarction may not require a specific arrhythmia evaluation, particularly if the left ventricular ejection fraction is well preserved.

#### ***Electrophysiological Study***

After an ischemia evaluation, the patient with coronary artery disease and syncope should undergo electrophysiological testing. Electrophysiological testing is a useful method to assess sinus node function and AV conduction; however, it is a much better test for identifying the presence of ventricular tachyarrhythmias and the risk of death in the patient with coronary artery disease and syncope. Independent of the left ventricular ejection fraction, patients with syncope, coronary artery disease, and inducible monomorphic ventricular tachycardia during electrophysiological testing should be treated with an implantable defibrillator.

Among patients with coronary artery disease, syncope, and mild-to-moderate left ventricular dysfunction, ie, left ventricular ejection fraction  $>0.35$ , inducible ventricular tachycardia during electrophysiological testing is relatively unlikely. Despite the low yield, electrophysiological testing is appropriate in this setting because of the significant implications of inducible ventricular tachycardia. After a negative electrophysiological test in this patient population, the evaluation is usually complete. However, when a definitive diagnosis is required, then an event monitor or an implantable loop monitor can be used.

In the interest of finding a specific diagnosis, the patient with coronary artery disease and syncope may undergo a diagnostic electrophysiological test if the left ventricular ejection fraction is  $<0.35$ . However, even in the absence of syncope, the patient with coronary artery disease and a left ventricular ejection fraction  $<0.35$  has a substantial survival benefit when treated with an implantable defibrillator.<sup>19,20</sup> Therefore, the patient with syncope and severe ischemic cardiomyopathy is an appropriate candidate for an implantable defibrillator regardless of the result of electrophysiological testing.<sup>19–21</sup> Comprehensive recommendations for implantable defibrillator therapy can be found in the ACC/

AHA/NASPE 2002 guideline update for implantation of cardiac pacemakers and antiarrhythmia devices.<sup>21</sup>

### **Nonischemic Dilated Cardiomyopathy**

Syncope is associated with increased mortality among patients with nonischemic dilated cardiomyopathy (NIDCM).<sup>22</sup> The likely reason for the increased mortality is that episodes of syncope in these patients often are caused by self-terminating episodes of ventricular tachycardia that, if recurring, can lead to cardiac arrest. The frequency of syncope in this group of patients is poorly defined. In the US Carvedilol study, which evaluated patients with refractory heart failure from any origin, 33% of patients had dizziness, but only 0.3% of patients had syncope over a 6-month period.<sup>23</sup>

The differential diagnosis of syncope in patients with NIDCM includes bradycardia, tachycardia, orthostatic hypotension, and pulmonary embolism. Although other causes of syncope may still occur in these patients, the presence of myocardial dysfunction increases the probability of an arrhythmic origin. Vigorous ventricular contraction is thought to be a critical component of the vagal response in patients with neurocardiogenic syncope. Therefore, it is unclear whether patients with ventricular dysfunction can develop vasodepressor syncope, although they have an abnormal vasodilatory response to a reduction in preload.<sup>24</sup> Heart failure drug therapy, eg, ACE inhibitors and  $\beta$ -blockers, can further aggravate the abnormal baroreflexes in patients with a cardiomyopathy by causing vasodilatation, volume depletion, and sinus node dysfunction. For these reasons, an abnormal head-up tilt table test alone should not lead to a diagnosis of vasodepressor syncope in a patient with NIDCM.

### **Electrophysiological Study**

Electrophysiological testing is frequently used to determine whether there is an arrhythmic basis for syncope, but it is less useful for patients with NIDCM than for patients with a prior myocardial infarction.<sup>25</sup> Ventricular stimulation also appears to have a limited role in the evaluation of these patients after an episode of syncope. A study of patients with advanced heart failure and syncope that included a large number of patients with NIDCM found that the 1-year risk of sudden death was 45% regardless of the cause of syncope.<sup>26</sup> These results suggest that electrophysiological testing in patients with NIDCM and syncope has a low negative predictive value. There is no consistent evidence to support the use of noninvasive testing to further risk-stratify a patient with unexplained syncope and a dilated cardiomyopathy.

### **NIDCM, Unexplained Syncope, and Negative Electrophysiological Study**

Data are limited with regard to the appropriate therapy for patients with NIDCM and syncope when a complete evaluation is unrevealing. There is no evidence to support the empirical use of antiarrhythmic drugs in these patients. Implantable defibrillator therapy, however, may be reasonable. A study of 14 patients with NIDCM, unexplained syncope, and a negative electrophysiological test who were treated with an implantable defibrillator found that 50% of the patients received appropriate defibrillator therapy during 2 years of follow-up.<sup>27</sup> Furthermore, recurrent syncope and

presyncope were due primarily to ventricular tachyarrhythmias, and the incidence of appropriate shocks was similar to that of patients with NIDCM and a history of cardiac arrest.<sup>27</sup> A similar study found a high proportion of appropriate defibrillator therapies in a group of patients with NIDCM and syncope who had no inducible arrhythmias.<sup>28</sup> At least 2 additional studies that reported the outcome of patients with NIDCM treated with an implantable defibrillator for secondary prevention of sudden cardiac death included patients who presented with syncope.<sup>29,30</sup> In 1 study, 10 patients presented with syncope resulting from ventricular tachycardia.<sup>29</sup> In the other study, 6 of 49 patients presented with syncope.<sup>30</sup> About half of the patients in each study received an appropriate shock during follow-up.

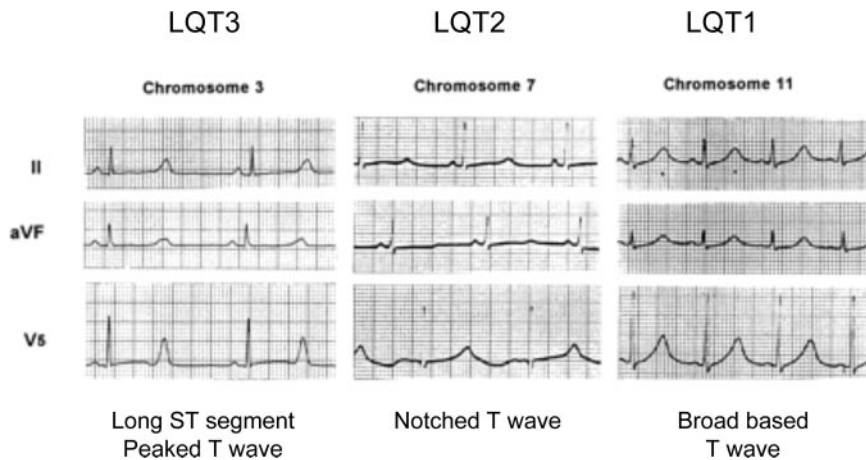
Several recent large trials have demonstrated the efficacy of defibrillator therapy in patients with advanced heart disease without prior syncope. The SCD-HeFT trial included a large number of patients with NIDCM and congestive heart failure. This study demonstrated a survival advantage with defibrillator therapy.<sup>20</sup> In the DEFINITE trial, which enrolled only patients with NIDCM, defibrillator therapy significantly reduced the risk of sudden cardiac death and demonstrated a nearly significant reduction in overall mortality.<sup>31</sup> Because syncope probably further increases the risk of sudden cardiac death in patients with NIDCM, ICD therapy is appropriate in this setting.

### **Syncope in Other Forms of Structural Heart Disease**

#### ***Hypertrophic Cardiomyopathy***

Hypertrophic cardiomyopathy is a relatively frequent (1 in 500 individuals), genetically determined myocardial disease with a variable prognosis.<sup>32–34</sup> The diagnosis of hypertrophic cardiomyopathy is confirmed with echocardiography, which demonstrates a hypertrophied, nondilated left ventricle in the absence of secondary causes of hypertrophy. Although the risk of sudden cardiac death was initially overestimated because of referral bias, hypertrophic cardiomyopathy remains an important cause of sudden death, particularly in young patients. The annual risk of sudden death in unselected patients with hypertrophic cardiomyopathy is estimated to be 0.6% to 1%.<sup>33,34</sup> There is often a striking discordance between the risk of sudden cardiac death, echocardiographic findings, and the presence of symptoms.

Syncope is a major risk factor for subsequent sudden cardiac death in hypertrophic cardiomyopathy (relative risk  $\approx 5$ ), particularly if it is repetitive or occurs with exertion.<sup>32–34</sup> However, in addition to self-terminating ventricular arrhythmias, many other mechanisms can cause syncope in hypertrophic cardiomyopathy, including supraventricular arrhythmias, severe outflow-tract obstruction, bradyarrhythmias, decreased blood pressure in response to exercise, and neurocardiogenic syncope.<sup>32</sup> The presence or absence of other sudden cardiac death risk factors such as family history of sudden death, frequent nonsustained ventricular tachycardia, or marked hypertrophy may help in the determination of risk. Most authorities agree that electrophysiological testing plays a minimal role in risk stratification. Specific genetic mutations have been identified that are associated with high risk of sudden cardiac death. However, the use of genotyping to



**Figure 2.** Different patterns of QT prolongation in LQTS. Morphology of the QT segment and T wave may be different in different genetic subsets of the LQTS, although there is significant individual variation. Reproduced with permission from Moss et al.<sup>64</sup>

determine sudden cardiac death risk is not readily available and is not routine.

Observational studies have demonstrated that implantable defibrillator therapy is effective in high-risk patients with hypertrophic cardiomyopathy.<sup>35</sup> Twelve percent of patients with hypertrophic cardiomyopathy who received an implantable defibrillator for primary prevention of sudden cardiac death received appropriate therapies during 3 years of follow-up. The incidence of appropriate and inappropriate implantable defibrillator shocks was 40% and 25%, respectively, in patients treated for secondary prevention.<sup>35</sup>

#### **Arrhythmogenic Right Ventricular Dysplasia/Cardiomyopathy**

ARVD/C is characterized by ventricular tachycardia and morphological abnormalities of the right ventricle caused by myocyte replacement by adipose tissue or fibrosis.<sup>36</sup> ARVD/C may be familial (30% to 50%), but sporadic forms occur and may represent a different disease process. The diagnosis of ARVD/C can be subtle, and the adoption of consensus criteria based on structural, functional, and ECG characteristics has been helpful.<sup>37,38</sup> Up to 20% of sudden cardiac deaths in patients <35 years of age may be secondary to ARVD/C. Sudden cardiac death may be the first manifestation of the disease process, but patients usually present with premature ventricular beats, syncope, or sustained ventricular tachycardia with a left bundle-branch block morphology.

Syncope is regarded as an ominous finding in ARVD/C. The utility of electrophysiological testing in these patients is not firmly established. Typically, sustained ventricular tachycardia is induced in patients who have presented clinically with ventricular tachycardia, but its role in risk stratification is unclear. Several recent series have demonstrated the efficacy of implantable defibrillator therapy in this group, noting annual rates of appropriate implantable defibrillator therapy of approximately 15% to 20%.<sup>39,40</sup>

#### **Syncope Resulting From Inherited Cardiac Ion Channel Abnormalities**

Inherited cardiac ion channel abnormalities can cause syncope and sudden death as a result of ventricular arrhythmias in the absence of structural heart disease. The 2 most prevalent are the LQTS and the Brugada syndrome. The diagnosis of both conditions relies on a careful family history

and analysis of the ECG (Figures 2 and 3). Family screening is important when an index patient is identified, although sporadic cases also occur.

#### **Long-QT Syndrome**

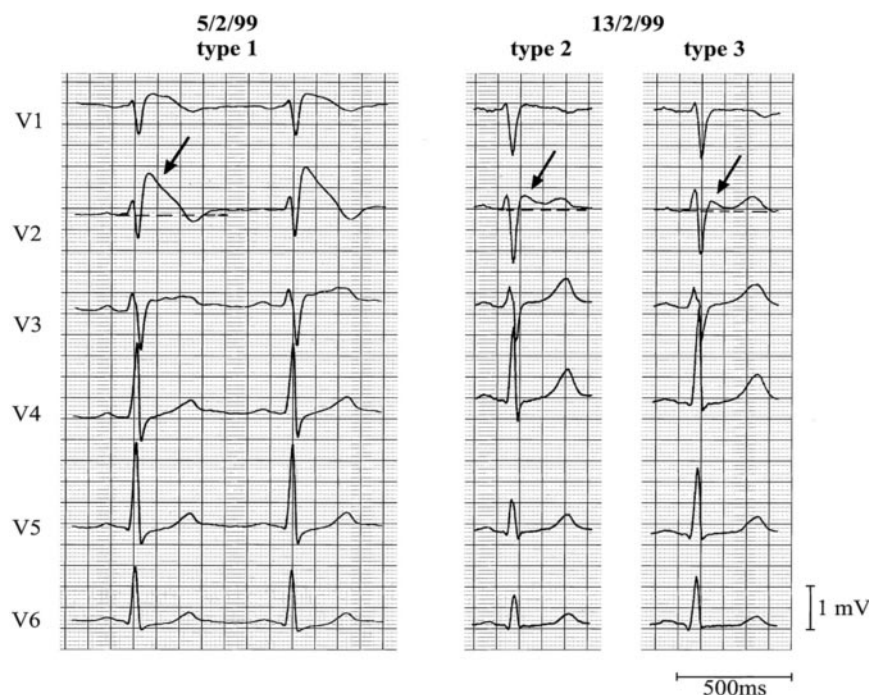
LQTS is characterized by prolongation of the QT interval with a QTc >450 ms. A genetic defect in either cardiac potassium (LQT1 and LQT2) or sodium (LQT3) channels results in delayed repolarization and QT prolongation.<sup>41</sup> LQTS generally is inherited with an autosomal dominant pattern variable penetrance. The risk of cardiac events depends on the specific genetic defect, gender, and age.<sup>42</sup> The most important nondemographic risk factor is the degree of QT prolongation. The lifetime risks of syncope or aborted or actual sudden death in LQTS patients with a QTc <440 ms, 460 to 500 ms, and >500 ms are approximately 5%, 20%, and 50%, respectively. Syncope is an ominous finding and is presumably secondary to an episode of torsade des pointes polymorphic ventricular tachycardia that terminates spontaneously. Treatment options include  $\beta$ -blockers and implantable defibrillators.<sup>43</sup> Other important interventions include restriction of strenuous or competitive exercise, avoidance of medicines that prolong the QT interval (a comprehensive listing is available at [www.QTdrugs.org](http://www.QTdrugs.org)), and family screening.

#### **Brugada Syndrome**

The Brugada syndrome is a heritable disorder of the cardiac sodium channel resulting in ST elevation in the anterior precordial leads, ie, V<sub>1</sub> and V<sub>2</sub>, and susceptibility to polymorphic ventricular tachycardia.<sup>44</sup> The distinctive ECG pattern is diagnostic (Figure 2), although the ECG is often dynamic. The diagnostic ECG findings may be intermittent, change over time, or be present only after provocative maneuvers, eg, procainamide infusion. Patients with Brugada syndrome who present with syncope have a 2-year risk of sudden cardiac death of approximately 30%<sup>44</sup>; hence, implantable defibrillator therapy typically is recommended.

#### **Evaluation of the Pediatric Patient With Syncope**

The differential diagnosis and evaluation of syncope in pediatric patients are similar to those in adults. Because underlying heart disease is less common in the young, syncope in pediatric patients is generally benign. The goal of



**Figure 3.** ECG changes in the Brugada syndrome. ST elevation occurs in the anterior precordial leads, leads V<sub>1</sub> and V<sub>2</sub>. Type 1 (covered) ECGs with  $\geq 1$  mV of ST elevation have the most prognostic significance. ECG recordings may change over time, as in this example, and serial ECGs may be important. Reproduced with permission from Wilde et al.<sup>65</sup>

the evaluation is to identify high-risk patients with underlying heart disease, which may include identifiable genetic abnormalities such as the LQTS, Brugada syndrome, or hypertrophic cardiomyopathy. The evaluation of the pediatric patient with syncope may extend to other family members when a genetic condition is identified.

The evaluation of syncope in the absence of underlying heart disease, ECG abnormalities, or positive family history is limited in scope and often ends with the exclusion of underlying heart disease. Syncope associated with high-intensity physical activity is a typical presentation of hypertrophic cardiomyopathy or catecholaminergic polymorphic ventricular tachycardia and generally is evaluated with an echocardiogram and an exercise stress test.

Syncope in a pediatric patient with a normal ECG and echocardiogram may be due to breathholding spells.<sup>45,46</sup> Breathholding spells resulting from emotional upset have been reported in 2% to 5% of well patients, and therapy is rarely required.<sup>46</sup> Neurocardiogenic syncope in the healthy child or adolescent is a common disturbance.

#### **Bradycardia and Tachycardia**

In pediatric patients, syncope caused by isolated bradycardia is relatively uncommon. In children, resting bradycardia may indicate drug ingestion, cardiac manifestations of anorexia nervosa, or central nervous system trauma. Transient but profound sinus pauses or sustained bradycardia may result in syncope due to a neurocardiogenic reflex. Most symptoms associated with sinus node dysfunction are due to an inadequate chronotropic response, but associated tachycardia should be sought. Syncope is uncommon in patients with first- and second-degree heart block, but the occurrence of complete AV block is a Class I indication for permanent pacing.<sup>23</sup> Tachycardia may cause syncope in the ostensibly normal pediatric patient; palpitations are a usual accompan-

ing symptom, but other nonspecific symptoms such as lightheadedness, chest pain, dyspnea, pallor, or nausea may be present.

#### **Underlying Heart Disease**

As in the adult patient, when underlying heart disease is present, syncope is potentially life-threatening for pediatric patients as compared with their normal counterparts.<sup>47</sup> The evaluation of syncope in this setting requires an understanding of the patient's cardiac anatomy, surgical history, and residual hemodynamic burden. Syncope resulting from hypercyanotic spells in children with untreated congenital heart disease such as tetralogy of Fallot is uncommon and should be considered an indication for surgical intervention. Complete AV block or ventricular tachycardia may account for syncope in patients with a history of surgery involving the ventricle(s), eg, tetralogy of Fallot or a ventricular septal defect. If ventricular tachycardia is suspected, then electrophysiological testing may be helpful. Patients with sustained ventricular tachycardia or symptomatic nonsustained ventricular tachycardia should be treated.

Hypertrophic cardiomyopathy is the most common cause of sudden cardiac death in adolescents.<sup>48</sup> Young age and syncope are risk factors for sudden cardiac death among these patients.<sup>37,49,50</sup> In pediatric patients with aortic stenosis, syncope typically occurs with exercise and is an ominous sign.<sup>46</sup> Syncope frequently is seen in children with primary pulmonary hypertension. Near-syncope or syncope has been reported as the presenting symptom in 13% of children with idiopathic dilated cardiomyopathy.<sup>51</sup>

Coronary artery anomalies are present in approximately 1% of the population. Although most children and adolescents with coronary artery anomalies are asymptomatic, syncope or sudden cardiac death may be the presenting symptom.<sup>52,53</sup> Patients are most at risk when an anomalous

coronary artery courses between the aorta and the pulmonary artery trunk.

### Special Considerations in the Elderly

The annual incidence of a fall in the elderly is 30%. Up to 30% of falls in the elderly may be due to syncope.<sup>54</sup> The clinical presentation of syncope in the elderly is often variable and atypical. Marked clinical overlap exists between falls, orthostatic hypotension, and dizzy spells, which may all present as syncope.<sup>54,55</sup> Furthermore, syncope may be multifactorial in the elderly patient. Special considerations in the evaluation of syncope in the elderly include (1) age-related changes that predispose the elderly to syncope; (2) varied clinical presentation that includes falls, gait disorders, dizzy spells, and amnesia; (3) drug interactions; and (4) multiple diseases.

Several age-related changes predispose the elderly to syncope. These alterations include reductions in thirst, ability to preserve sodium and water, baroreceptor response, and heart rate response to orthostatic stress, as well as autonomic dysfunction.<sup>55,56</sup> These physiological changes, in combination with the frequent use of multiple medications, are risk factors for orthostatic intolerance and syncope.

Aging is associated with a variety of diseases, including underlying heart disease, gait disorders, cardiovascular deconditioning, recurrent falls, and orthostatic hypotension. The elderly often are treated with multiple medications, including diuretics,  $\beta$ -blockers, calcium antagonists, ACE inhibitors, nitrates, antipsychotic agents, tricyclic antidepressants, antihistamines, dopamine agonists and antagonists, and narcotics, all of which may precipitate syncope. Alcohol also may be a contributing factor. The effects of these drugs and their interactions are exacerbated in the elderly because of the loss of peripheral autonomic tone that occurs with aging.<sup>56</sup>

Orthostatic hypotension is common in older patients and is the cause of syncope in 6% to 33% of patients.<sup>57</sup> A common clinical presentation of syncope in the elderly is postprandial hypotension that is frequently confused with transient ischemic attacks or seizures. Carotid sinus hypersensitivity is an underrecognized cause of syncope in the elderly.<sup>58</sup> A recent report suggests that 30% of unexplained syncope in the elderly is due to carotid sinus hypersensitivity, although pacing may not prevent syncope.<sup>59</sup> Neurally mediated causes remain a frequent mechanism of syncope in the elderly and may be underestimated because of an atypical presentation. Cardiovascular medications may be responsible for almost half of these episodes.

Elderly patients may present with recurrent falls resulting from syncope. Gait disorders secondary to central nervous system alterations may be associated with orthostatic hypotension and other chronic autonomic disorders. Unexplained syncope may be the first manifestation of degenerative disorders such as Parkinson's disease.<sup>56,60</sup> Classic clinical features of neurally mediated causes of syncope, including typical pre-episode and postepisode symptoms, often are absent in older patients.<sup>11,56</sup> Furthermore, complete amnesia is present in up to 40% of elderly patients with syncope.<sup>61</sup>

As with other patients with syncope, the goal of the diagnostic evaluation in the elderly is to exclude life-threatening illnesses and to prevent recurrent falls. Orthostat-

ic blood pressure and heart rate measurements should be obtained.

The treatment of syncope is directed at its cause. In the elderly, multiple origins of syncope frequently coexist and need to be addressed. Particular emphasis should be given to the impact of polypharmacy, orthostatic intolerance, autonomic dysfunction, and carotid sinus hypersensitivity.

### Neurological Evaluation

Neurological causes should be considered in patients with syncope, although syncope is an unusual manifestation of neurological processes. Neurological causes of syncope should be pursued only if suggested by the history or physical examination.

Cardiac causes of syncope can be accompanied by upward gaze deviation, asynchronous myoclonic jerks, and brief automatisms that result from global cerebral hypoperfusion and are not an indication for a neurological evaluation. Cerebrovascular disease can cause syncope in the presence of severe bilateral carotid or basilar artery disease, but syncope in these settings rarely occurs in the absence of other focal neurological signs or symptoms. Syncope in the supine position, preceded by an aura, or followed by confusion or amnesia is likely caused by a neurological disorder. Focal neurological signs such as diplopia, limb weakness, sensory deficits, or speech difficulties indicate an abnormality in a particular brain area, are usually caused by a seizure, and are an indication for a neurological evaluation.<sup>62,63</sup>

Neurological disorders that cause syncope typically result in orthostatic hypotension from dysautonomia, and they can be suspected by the history, screening neurological examination, and bedside testing of orthostatic vital signs. Orthostatic hypotension can be induced by tricyclic antidepressants, nitrates, and antiparkinsonian medications; neurodegenerative disorders of the central nervous system such as Parkinson's disease; or a peripheral autonomic neuropathy such as diabetes mellitus. Autonomic testing to confirm the presence of a dysautonomia, distinguish central from peripheral causes, and guide patient management includes tilt table testing, cardiac responses to deep breathing and the Valsalva maneuver, and sweat testing. Disorders that increase intracranial pressure, eg, subarachnoid hemorrhage or rarely brain tumors, can result in true syncope. The neurological basis of these disorders is usually obvious and associated with headache, meningismus, and/or other focal neurological findings.

Seizure disorders are the most common neurological cause of episodic unresponsiveness. Seizure disorders can be confirmed by an electroencephalogram, although repeated studies, prolonged electroencephalographic monitoring, or a sleep-deprived electroencephalogram may be necessary.

Cardiac involvement is frequent in neuromuscular diseases, eg, Duchenne dystrophy. As a result of cardiac involvement, these patients may develop cardiomyopathy, complete AV block, ventricular tachycardia, or ventricular fibrillation. Evaluation of syncope in the setting of a neuromuscular disease includes an ECG, an echocardiogram, and an assessment for cardiac ischemia. Treatment may include pacemaker or implantable defibrillator therapy.<sup>21</sup>

When a neurological basis of syncope is suspected, imaging of the brain with either CT or MRI is indicated. If

cerebrovascular disease is suspected, imaging of the extracranial and intracranial carotid arteries is appropriate.

### Conclusions

Syncope can be a precursor to sudden death, particularly in patients with underlying heart disease. Most importantly, the evaluation of syncope includes an assessment for structural heart disease and ischemia. Less common causes of syncope that are associated with sudden death should be excluded and include Wolff-Parkinson-White syndrome and inherited car-

diac ion channel abnormalities, eg, LQTS. When underlying heart disease is identified, the evaluation and treatment are generally 2 pronged. First, the underlying heart disease, with or without ischemia, and its possible contribution to the episode of syncope must be addressed. Second, a primary arrhythmia evaluation, with ventricular tachycardia or ventricular fibrillation in mind, should be pursued. A specific diagnosis should be obtained, particularly in high-risk patients, thus allowing appropriate and potentially life-saving therapy.

### Writing Group Disclosures

Writing Group Member Name	Employment	Research Grant	Other Research Support	Speakers Bureau/Honoraria	Ownership Interest	Consultant/Advisory Board	Other
S. Adam Strickberger	Washington Hospital Center	Guidant; Medtronic; St Jude Medical	None	None	None	Guidant	None
D. Woodrow Benson	University of Cincinnati	None	None	None	None	None	None
Italo Biaggioni	Vanderbilt University	CV Therapeutics; Boehringer Ingelheim	None	None	Patent licensee, CV Therapeutics	CV Therapeutics	None
David J. Callans	University of Pennsylvania Health System	None	None	None	None	None	None
Mitchell I. Cohen	Arizona Pediatric Cardiology Consultants/Obsterix	None	None	None	None	None	None
Kenneth A. Ellenbogen	Medical College of Virginia	Bristol Myers Squibb; Bertex; Guidant; Medtronic; Pfizer; St Jude Medical	None	Guidant; Medtronic; St Jude Medical	None	Guidant; Medtronic; St Jude Medical	None
Andrew E. Epstein	University of Alabama	Guidant; IBI; Medtronic; St Jude Medical	None	GSK; Medtronic; St Jude Medical; Reliant	None	None	None
Paul Friedman	Mayo Clinic	AstraZeneca; Bard; Guidant; Medtronic; St Jude Medical	None	Medtronic	License agreement via Mavo Medical Ventures with Bard EP; Hewlett Packard	Medtronic	None
Jeffrey Goldberger	Northwestern University	None	None	None	President, Gold T-Tech	None	None
Paul A. Heidenreich	Palo Alto VA Medical Center	None	None	None	None	None	None
George J. Klein	University of Western Ontario	None	None	None	Medtronic; Cyrocath Technologies	Medtronic; Cyrocath Technologies	None
Bradley P. Knight	University of Chicago	None	None	Guidant; Medtronic	None	Boston Scientific; Guidant; Medtronic	None
Carlos A. Morillo	McMaster University	None	None	None	None	None	None
Robert J. Myerburg	None	None	None	None	None	Reliant Pharmaceuticals; Proctor and Gamble Corp; Sanofi-Aventis; Guidant Corp	None
Cathy A. Sila	Cleveland Clinic	AstraZeneca; Boehringer Ingelheim; NMT; Paion	None	Boehringer Ingelheim; Sanofi	None	Sanofi	None

This table represents the relationships of writing group members that may be perceived as actual or reasonably perceived conflicts of interest as reported on the Disclosure Questionnaire, which all writing group members are required to complete and submit.

## Reviewers' Disclosures

Reviewer	Employment	Research Grant	Other Research Support	Speakers Bureau/Honoraria	Ownership Interest	Consultant/Advisory Board	Other
Jonathan Abrams	University of New Mexico	None	None	None	None	None	None
Eric R. Bates	University of Michigan	None	None	None	None	None	None
Hugh Calkins	Johns Hopkins	None	None	None	None	None	None
Mark D. Carlson	University Hospitals of Cleveland	None	Guidant; St Jude Medical; Proctor & Gamble	Medtronic	None	None	None
Anne B. Curtis	University of Florida	Medtronic; Guidant	None	Medtronic; Guidant; St Jude Medical	None	Medtronic; St Jude Medical	None
Leonard S. Dreifus	Drexel University	None	None	None	None	Merck	None
Mark J. Eisenberg	McGill University	Aventis	None	None	None	None	None
Roger A. Freedman	University of Utah	Guidant; St. Jude Medical; Medtronic	None	Guidant; St Jude Medical	None	Guidant; St Jude Medical	Guidant; St Jude Medical; Medtronic
Gabriel Gregoratos	UCSF	None	None	Pfizer	None	GlaxoSmithKline; CV Therapeutics	None
David E. Haines	William Beaumont Hospital	Medtronic	None	Medtronic Cryocath	Ablatrix	Guidant; Boston Scientific	None
Peter Karpawich	Children's Hospital, Michigan; Wayne State University	None	None	St Jude Medical	None	Medtronic	None
Peter Kowey	Lankenau Medical Office Building	Guidant; Medtronic	None	Guidant; Medtronic	Cardionet	None	None
Jonathan R. Lindner	University of Virginia	None	None	None	Targeson	VisualSonics	None
Bruce D. Lindsay	Washington University School of Medicine	Medtronic; Guidant	None	None	None	Medtronic; Guidant	None
Fred Morady	University of Michigan Health System	None	None	None	None	None	None
Gerald V. Naccarelli	Pennsylvania State College of Medicine	Guidant; Medtronic	None	Guidant; Medtronic	None	Reliant; GlaxoSmithKline; Sanofi-Aventis; AstraZeneca	None
Melvin M. Scheinman	UCSF	None	None	None	None	None	None
Richard Schofield	University of Florida Health Science Center	None	None	AstraZeneca; Novartis; Pfizer	None	Pfizer	None
Samuel J. Shubrooks, Jr	Harvard Medical School	None	None	None	None	None	None
M.J. Silka	USC	None	None	None	None	None	None
Andrea M. Russo	University of Pennsylvania Health System	Guidant; Medtronic; St Jude Medical	None	None	None	None	None

This table represents the relationships of reviewers that may be perceived as actual or reasonably perceived conflicts of interest as reported on the Reviewer Disclosure Questionnaire, which all reviewers are required to complete and submit.

## References

- Kapoor WN. Syncope. *N Engl J Med*. 2000;343:1856–1862.
- Manolis AS. Evaluation of patients with syncope: focus on age-related differences. *ACC Curr J Rev*. 1994;November/December:13–18.
- Linzer M, Yang EH, Estes NA III, Wang P, Vorperian VR, Kapoor WN. Diagnosing syncope, part I: value of history, physical examination, and electrocardiography: Clinical Efficacy Assessment Project for the American College of Physicians. *Ann Intern Med*. 1997;126:989–996.
- Kapoor WN. Current evaluation and management of syncope. *Circulation*. 2002;106:1606–1609.
- Sheldon R, Rose S, Ritchie D, Connolly SJ, Koshman ML, Lee MA, Frenneaux M, Fisher M, Murphy W. Historical criteria that distinguish syncope from seizures. *J Am Coll Cardiol*. 2002;40:142–148.
- Calkins H, Shyr Y, Frumin H, Schork A, Morady F. The value of the clinical history in the differentiation of syncope due to ventricular tachycardia, atrioventricular block, and neurocardiogenic syncope. *Am J Med*. 1995;98:365–373.
- Antzelevitch C. Molecular genetics of arrhythmias and cardiovascular conditions associated with arrhythmias. *Pacing Clin Electrophysiol*. 2003;26:2194–2208.
- Maron BJ. Sudden death in young athletes. *N Engl J Med*. 2003;349:1064–1075.
- McKenna WJ, Behr ER. Hypertrophic cardiomyopathy: management, risk stratification, and prevention of sudden death. *Heart*. 2002;87:169–176.
- Goldschlager N, Epstein AE, Grubb BP, Olshansky B, Prystowsky E, Roberts WC, Scheinman MM, for the Practice Guidelines Subcommittee, North American Society of Pacing and Electrophysiology. Etiologic considerations in the patient with syncope and an apparently normal heart. *Arch Intern Med*. 2003;163:151–162.
- Linzer M, Pritchett E, Pontinen M, McCarthy E, Divine G. Incremental diagnostic yield of loop electrocardiographic recorders in unexplained syncope. *Am J Cardiol*. 1990;66:214–219.
- Assar M, Krahn A, Klein G, Yee R, Skanes A. Optimal duration of monitoring in patients with unexplained syncope. *Am J Cardiol*. 2003;92:1231–1233.
- Krahn A, Klein G, Yee R, Hoch J, Skanes A. Cost implications of testing strategy in patients with syncope: randomized assessment of syncope trial. *J Am Coll Cardiol*. 2003;42:495–501.
- Sagrista-Sauleda J, Romero-Ferrer B, Moya A, Permanyer-Miralda G, Soler-Soler J. Variations in diagnostic yield of head-up tilt test and electrophysiology in groups of patients with syncope of unknown origin. *Eur Heart J*. 2001;22:857–865.
- Fujimura O, Yee R, Klein G, Sharma A, Boahene K. The diagnostic sensitivity of electrophysiologic testing in patients with syncope caused by transient bradycardia. *N Engl J Med*. 1989;321:1703–1707.
- Garcia-Civera R, Ruiz-Granell R, Morell-Cabedo S, Sanjuan-Manez R, Perez-Alcala F, Plancha E, Navarro A, Botella S, Llacer A. Selective use of diagnostic tests in patients with syncope of unknown cause. *J Am Coll Cardiol*. 2003;41:787–790.
- Sarasin FP, Louis-Simonet M, Carballo D, Slama S, Rajeswaran A, Metzger JT, Lovis C, Unger PF, Junod AF. Prospective evaluation of patients with syncope: a population-based study. *Am J Med*. 2001;111:177–184.
- DiMarco J, Garan H, Ruskin J. Complications in patients undergoing cardiac electrophysiologic procedures. *Ann Intern Med*. 1982;97:490–493.
- Moss AJ, Zareba W, Hall WJ, Klein H, Wilber DJ, Cannom DS, Daubert JP, Higgins SL, Brown MW, Andrews ML, for the Multicenter Automatic Defibrillator Implantation Trial II Investigators. Prophylactic implantation of a defibrillator in patients with myocardial infarction and reduced ejection fraction. *N Engl J Med*. 2002;21;346:877–883.
- Bardy GH, Lee KL, Mark DB, Poole JE, Packer DL, Boineau R, Domanski M, Troutman C, Anderson J, Johnson G, McNulty SE, Clapp-Channing N, Davidson-Ray LD, Fraulo ES, Fishbein DP, Luceri RM, Ip JH, for the Sudden Cardiac Death in Heart Failure Trial (SCD-HeFT) Investigators. Amiodarone or an implantable cardioverter-defibrillator for congestive heart failure. *N Engl J Med*. 2005;352:225–237.
- Gregoratos G, Abrams J, Epstein AE, Freedman RA, Hayes DL, Hlatky MA, Kerber RE, Naccarelli GV, Schoenfeld MH, Silka MJ, Winters SL, Gibbons RJ, Antman EM, Alpert JS, Gregoratos G, Hiratzka LF, Faxon DP, Jacobs AK, Fuster V, Smith SC Jr, for the American College of Cardiology/American Heart Association Task Force on Practice Guidelines/North American Society for Pacing and Electrophysiology Committee to Update the 1998 Pacemaker Guidelines. ACC/AHA/NASPE 2002 guideline update for implantation of cardiac pacemakers and antiarrhythmia devices: summary article: a report of the American College of Cardiology/American Heart Association Task Force on Practice Guidelines (ACC/AHA/NASPE Committee to Update the 1998 Pacemaker Guidelines). *Circulation*. 2002;106:2145–2161.
- Singh SK, Link MS, Wang PJ, Homoud M, Estes MNA III. Syncope in the patient with nonischemic dilated cardiomyopathy. *Pacing Clin Electrophysiol*. 2004;27:97–100.
- Packer M, Bristow MR, Cohn JN, Colucci WS, Fowler MB, Gilbert EM, Shusterman NH. The effect of carvedilol on morbidity and mortality in patients with chronic heart failure: US Carvedilol Heart Failure Study Group. *N Engl J Med*. 1996;334:1349–1355.
- Atherton JJ, Thomson HL, Moore TD, Wright KN, Muehle GW, Fitzpatrick LE, Frenneaux MP. Diastolic ventricular interaction: a possible mechanism for abnormal vascular responses during volume unloading in heart failure. *Circulation*. 1997;96:4273–4279.
- Das SK, Morady F, DiCarlo L Jr, Baerman J, Krol R, De Buitelir M, Crevey B. Prognostic usefulness of programmed ventricular stimulation in idiopathic dilated cardiomyopathy without symptomatic ventricular arrhythmias. *Am J Cardiol*. 1986;58:998–1000.
- Middlekauff HR, Stevenson WG, Stevenson LW, Saxon LA. Syncope in advanced heart failure: high risk of sudden death regardless of origin of syncope. *J Am Coll Cardiol*. 1993;21:110–116.
- Knight BP, Goyal R, Pelosi F, Flemming M, Horwood L, Morady F, Strickberger SA. Outcome of patients with nonischemic dilated cardiomyopathy and unexplained syncope treated with an implantable defibrillator. *J Am Coll Cardiol*. 1999;33:1964–1970.
- Russo AM, Verdino R, Schorr C, Nicholas M, Dias D, Hsia H, Callans D, Marchlinski FE. Occurrence of implantable defibrillator events in patients with syncope and nonischemic dilated cardiomyopathy. *Am J Cardiol*. 2001;88:1444–1446.
- Fazio G, Veltri EP, Tomaselli G, Lewis R, Griffith LS, Guarnieri T. Long-term follow-up of patients with nonischemic dilated cardiomyopathy and ventricular tachycardias treated with implantable cardioverter defibrillators. *Pacing Clin Electrophysiol*. 1991;14:1905–1910.
- Grimm W, Marchlinski FE. Shock occurrence and survival in 49 patients with idiopathic dilated cardiomyopathy and an implantable cardioverter-defibrillator. *Eur Heart J*. 1995;16:218–222.
- Kadish A, Dyer A, Daubert JP, Quigg R, Estes NA, Anderson KP, Calkins H, Hoch D, Goldberger J, Shalaby A, Sanders WE, Schaechter A, Levine JH, for the Defibrillators in Non-Ischemic Cardiomyopathy Treatment Evaluation (DEFINITE) Investigators. Prophylactic defibrillator implantation in patients with nonischemic dilated cardiomyopathy. *N Engl J Med*. 2004;350:2151–2158.
- Spirito P, Seidman C, McKenna WJ, Maron BJ. The management of hypertrophic cardiomyopathy. *N Engl J Med*. 1997;336:775–785.
- Maron BJ. Hypertrophic cardiomyopathy: a systematic review. *JAMA*. 2002;287:1308–1320.
- Elliott PM, Poloniecki J, Dickie S, Sharma S, Monserrat L, Varnava A, Mahon NG, McKenna WJ. Sudden death in hypertrophic cardiomyopathy: identification of high risk patients. *J Am Coll Cardiol*. 2000;36:2212–2218.
- Maron BJ, Shen WK, Link MS, Epstein AE, Almquist AK, Daubert JP, Bardy GH, Favale S, Rea RF, Boriani G, Estes NA III, Spirito P. Efficacy of implantable cardioverter-defibrillators for the prevention of sudden cardiac death in patients with hypertrophic cardiomyopathy. *N Engl J Med*. 2000;342:365–373.
- Marcus FI, Fontaine GH, Guiraudon G, Frank R, Laurenceau JL, Malergue C, Grosgeat Y. Right ventricular dysplasia: a report of 24 adult cases. *Circulation*. 1982;65:384–398.
- Richardson P, McKenna W, Bristow M, Maisch B, Mautner B, O'Connell J, Olsen E, Thiene G, Goodwin J, Gyarras I, Martin I, Nordet P. Report of the 1995 World Health Organization/International Society and Federation of Cardiology Task Force on the Definition and Classification of Cardiomyopathies. *Circulation*. 1996;93:841–842.
- Nasir K, Bomma C, Tandri H, Roguin A, Dalal D, Prakasa K, Tichnell C, James C, Spevak PJ, Marcus F, Calkins H. Electrocardiographic features of arrhythmogenic right ventricular dysplasia/cardiomyopathy according to disease severity: a need to broaden diagnostic criteria. *Circulation*. 2004;110:1527–1534.
- Corrado D, Leoni L, Link MS, Della Bella P, Gaita F, Curmis A, Salerno JU, Iqbalbhashian D, Raviele A, Disertori M, Zanon G, Verlato R, Vergara G, Delise P, Turrini P, Basso C, Naccarella F, Maddalena F, Estes NA III, Buja G, Thiene G. Implantable cardioverter-defibrillator therapy for pre-

- vention of sudden death in patients with arrhythmogenic right ventricular cardiomyopathy/dysplasia. *Circulation*. 2003;108:3084–3091.
40. Roguin A, Bomma CS, Nasir K, Tandri H, Tichnell C, James C, Rutberg J, Crosson J, Spevak PJ, Berger RD, Halperin HR, Calkins H. Implantable cardioverter-defibrillators in patients with arrhythmogenic right ventricular dysplasia/cardiomyopathy. *J Am Coll Cardiol*. 2004;43:1843–1852.
  41. Schwartz PJ, Priori SG. Long QT syndrome: genotype-phenotype considerations. In: Zipes DP, Jalife J, eds. *Cardiac Electrophysiology: From Cell to Bedside*. 4th ed. Philadelphia, Pa: WB Saunders; 2004:651–659.
  42. Priori SG, Schwartz PJ, Napolitano C, Bloise R, Ronchetti E, Grillo M, Vicentini A, Spazzolini C, Nastoli J, Bottelli G, Folli R, Cappelletti D. Risk stratification in the long QT syndrome. *N Engl J Med*. 2003;348:1866–1874.
  43. Zareba W, Moss AJ, Daubert JP, Hall WJ, Robinson JL, Andrews M. Implantable cardioverter-defibrillator in high-risk long QT syndrome patients. *J Cardiovasc Electrophysiol*. 2003;14:337–341.
  44. Brugada J, Brugada R, Antzelevitch C, Towbin J, Nademanee K, Brugada P. Long-term follow up of individuals with the electrocardiographic pattern of right bundle branch block and ST segment elevation in pre-cordial leads V1 to V3. *Circulation*. 2002;105:73–78.
  45. DiMario FJ Jr. Prospective study of children with cyanotic and pallid breath-holding spells. *Pediatrics*. 2001;107:265–269.
  46. Kelly AM, Porter CJ, McGoon MD, Espinosa RE, Osborn MJ, Hayes DL. Breath-holding spells associated with significant bradycardia: successful treatment with permanent pacemaker implantation. *Pediatrics*. 2001;108:698–702.
  47. Maron BJ, Shirani J, Poliac LC, Mathenge R, Roberts WC, Mueller FO. Sudden death in young competitive athletes: clinical, demographic, and pathological profiles. *JAMA*. 1996;276:199–204.
  48. Roccini AP, Chun PO, Dick M. Ventricular tachycardia in children. *Am J Cardiol*. 1981;47:1091–1097.
  49. Maron BJ, McKenna WJ, Danielson GK, Kappenberger LJ, Kuhn HJ, Seidman CE, Shah PM, Spencer WH III, Spirito P, Ten Cate FJ, Wigle ED, for the Task Force on Clinical Expert Consensus Documents, American College of Cardiology; Committee for Practice Guidelines, European Society of Cardiology. American College of Cardiology/European Society of Cardiology clinical expert consensus document on hypertrophic cardiomyopathy: a report of the American College of Cardiology Foundation Task Force on Clinical Expert Consensus Documents and the European Society of Cardiology Committee for Practice Guidelines. *J Am Coll Cardiol*. 2003;42:1687–1713.
  50. Campbell M. The natural history of congenital aortic stenosis. *Br Heart J*. 1968;30:514–526.
  51. Friedman RA, Moak JP, Garson A Jr. Clinical course of idiopathic dilated cardiomyopathy in children. *J Am Coll Cardiol*. 1991;18:152–156.
  52. Maron BJ, Roberts WC, McAllister HA, Rosing DR, Epstein SE. Sudden death in young athletes. *Circulation*. 1980;62:218–229.
  53. Basso C, Maron BJ, Corrado D, Thiene G. Clinical profile of congenital coronary artery anomalies with origin from the wrong aortic sinus leading to sudden death in young competitive athletes. *J Am Coll Cardiol*. 2000;35:1493–1501.
  54. Tinetti ME, Williams CS, Gill TM. Dizziness among older adults: a possible geriatric syndrome. *Ann Intern Med*. 2000;132:337–344.
  55. Kenny RA, Kalaria R, Ballard C. Neurocardiovascular instability in cognitive impairment and dementia. *Ann NY Acad Sci*. 2002;977:183–195.
  56. Didyk N, Morillo CA. Falls, dizziness and syncope in the very old. In: Turpie ID, Heckman GA, eds. *Aging Issues in Cardiology*. Norwell, Mass: Kluwer Academic Publishers; 2004:115–138.
  57. Lipsitz LA, Pluchino FC, Wei JY, Rowe JW. Syncope in institutionalized elderly: the impact of multiple pathological conditions and situational stress. *J Chronic Dis*. 1986;39:619–630.
  58. Morillo CA, Camacho ME, Wood MA, Gilligan DM, Ellenbogen KA. Diagnostic utility of mechanical, pharmacological and orthostatic stimulation of the carotid sinus in patients with unexplained syncope. *J Am Coll Cardiol*. 1999;34:1587–1594.
  59. Kenny RA, Richardson DA, Steen N, Bexton RS, Shaw FE, Bond J. Carotid sinus syndrome: a modifiable risk factor for nonaccidental falls in older adults (SAFE PACE). *J Am Coll Cardiol*. 2001;38:1491–1496.
  60. Lipsitz LA. Orthostatic hypotension in the elderly. *N Engl J Med*. 1989;321:952–957.
  61. Kenny RA. Syncope in the elderly: diagnosis, evaluation, and treatment. *J Cardiovasc Electrophysiol*. 2003;14:S74–S77.
  62. Kaufmann H, Bhattacharya K. Diagnosis and treatment of neurally mediated syncope. *Neurologist*. 2002;8:175–185.
  63. Kaufmann H. Syncope: a neurologist's viewpoint. *Cardiol Clin*. 1997;15:177–194.
  64. Moss AJ, Zareba W, Benhorin J, Locati EH, Hall WJ, Robinson JL, Schwartz PJ, Towbin JA, Vincent GM, Lehmann MH. ECG T wave patterns in genetically distinct forms of the hereditary long QT syndrome. *Circulation*. 1995;92:2929–2934.
  65. Wilde AA, Antzelevitch C, Borggrefe M, Brugada J, Brugada R, Brugada P, Corrado D, Hauer RN, Kass RS, Nademanee K, Priori SG, Towbin JA, for the Study Group on the Molecular Basis of Arrhythmias of the European Society of Cardiology. Proposed diagnostic criteria for the Brugada syndrome: consensus report. *Circulation*. 2002;106:2514–2519.

---

KEY WORDS: AHA Scientific Statements ■ echocardiography ■ cardiac arrest ■ syncope ■ defibrillation ■ fibrillation ■ tachycardia